

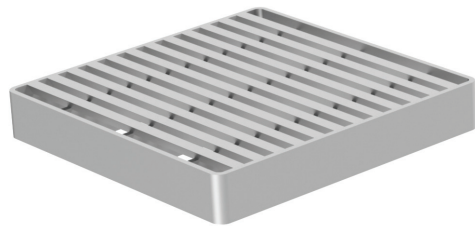
ACO GULLY 218 – Grates

**Part No.
142010**

ACO Gully 218 5 Star slip resistant grate, load class L15, grade 304 stainless steel

Product Features

1. **Load Class L15 (EN 1253), similar to class A10kN (AS 3996)**
2. **AS 3996 (Clause 3.3.5) compliant for surface openings in pedestrian areas**
3. **Slip resistant**
 - AS 4586: R11/R11¹– Slip resistance classification for Oil-Wet Inclining Platform Test²
 - AS 4586: P4 – Slip resistance classification for Wet Pendulum Test²
4. **Manufactured from grade 304 stainless steel**
5. **Hydraulic data**
 - 36,060mm² intake area



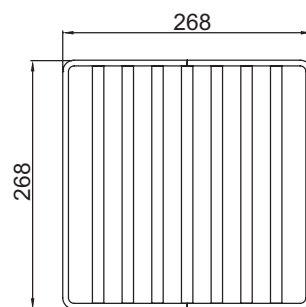
¹Test direction (perpendicular/parallel)

²NATA endorsed test reports available

Specification Clause

The 5 Star slip resistant grate shall be to suit ACO Gully 218 (Part No. 142010). The grate shall be Load Class L15 (EN 1253), similar to Class A10kN (AS 3996).

The grate shall be manufactured from grade 304 stainless steel and compliant with AS 3996 Surface openings in pedestrian areas.



ACO Limited, New Zealand

Ph: 0800 448 080
<https://askaco.nz/aco-gully/>
sales@aconz.co.nz

Start Your
Specification
Here



© December, 2014 ACO Polycrete Pty Ltd. All reasonable care has been taken in compiling the information in this document. All recommendations and suggestions on the use of ACO products are made without guarantee since the conditions of use are beyond the control of the company. It is the customer's responsibility to ensure that each product is fit for its intended purpose and that the actual conditions are suitable. ACO Polycrete Pty Ltd. pursues a policy of continuous product development and reserves the right to amend specifications without notice.

