



Product Data Sheet

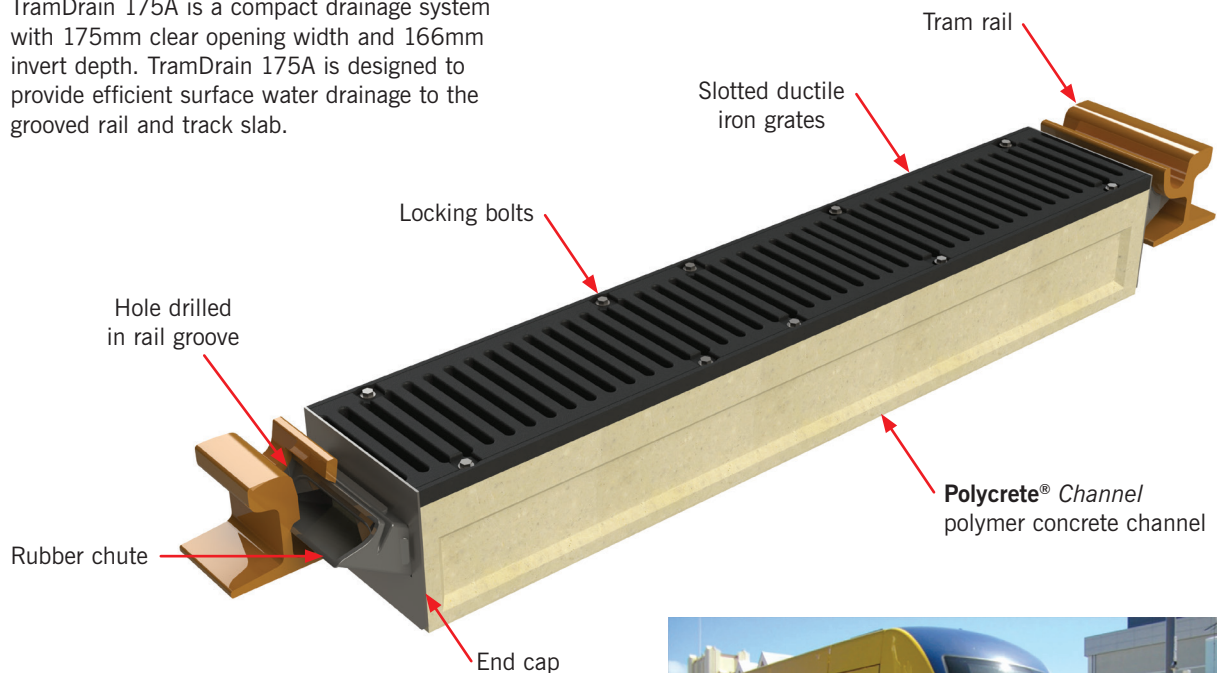
ACO INFRASTRUCTURE



TramDrain 175A

Grooved rail and track slab drainage. 191mm overall channel depth.

TramDrain 175A is a compact drainage system with 175mm clear opening width and 166mm invert depth. TramDrain 175A is designed to provide efficient surface water drainage to the grooved rail and track slab.



Benefits of the TramDrain 175A System

- Compact drainage system
- Compatible with grooved rail and track slab
- Rubber chute is flexible to suit various tram rail profiles
- Rubber chute isolates TramDrain from stray currents in the tram rail
- Channels manufactured from lightweight polymer concrete
- Channels discharge through vertical outlet

TramDrain 175A length and areas of use

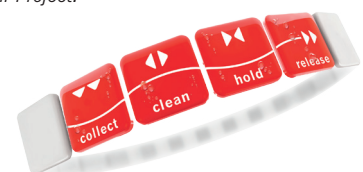
- 1265mm – Standard and intertrack

Slotted ductile iron grates

- 15mm wide slots
- Certified to AS3996 Class D (210kN)
- Secured and locked down with bolts



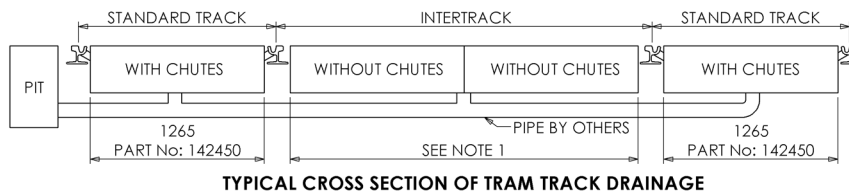
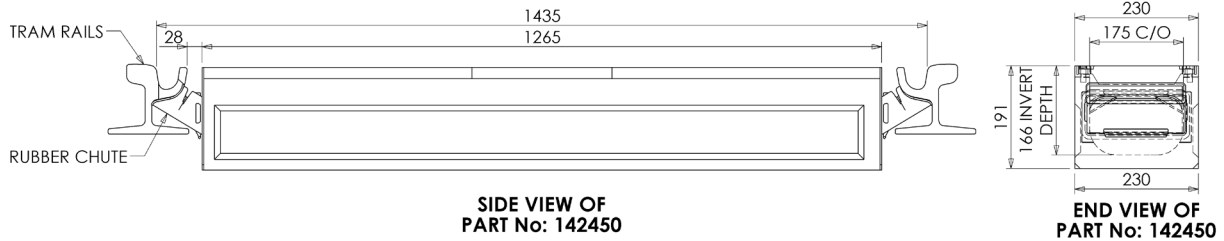
Gold Coast QLD Light Rail Project.



ACO INFRASTRUCTURE

TramDrain 175A

Grooved rail and track slab drainage. 191mm overall channel depth.



Parts Table

Part No.	Description	Overall Length (mm)	Overall Width (mm)	Overall Depth (mm)	Invert Depth (mm)	Weight (kg)
TramDrain 175A Complete System						
142450	TramDrain 175A – 1265mm long channel complete with Slotted grates, end caps and rubber chutes	1265	230	191	166	64
TramDrain 175A Channel with Slotted Grates						
142447	TramDrain 175A – 1259mm long channel with Slotted grates	1259	230	191	166	61
TramDrain 175A End Caps						
141297	TramDrain 175A end cap with rubber chute inlet	3	230	191	–	1.2
141298	TramDrain 175A blank end cap	3	230	191	–	1
TramDrain Rubber Chute						
302054	TramDrain rubber chute	–	–	–	–	0.2
TramDrain Universal Junction Pit						
142437	UJP-614 with Slotted grate	500	360	1261	1247	104
142369	UJP-614 with Heelsafe® grate	500	360	1261	1247	106

Notes:

1. Multiples of 1259mm long channels can be joined to form various lengths and the channels can be cut down to length as required for the 'intertrack' drainage.

