

DrainLine 100 is made from durable polymer concrete and helps to divert rainwater from driveways, paths, garages, homes and patios in order to protect buildings.

The wide selection of snap-fit grates in choice of styles and materials make it simple to meet any aesthetic and application requirements.

The polymer concrete body of DrainLine 100 has excellent strength and is resilient to salt, oil, gas, etc. Its v-shaped profile and smooth surface make it very effective in high flow situations.

DrainLine 100 is suitable for pedestrian or light vehicle traffic applications such as:

- Driveways
- Paths
- Garages
- Patios
- Pools

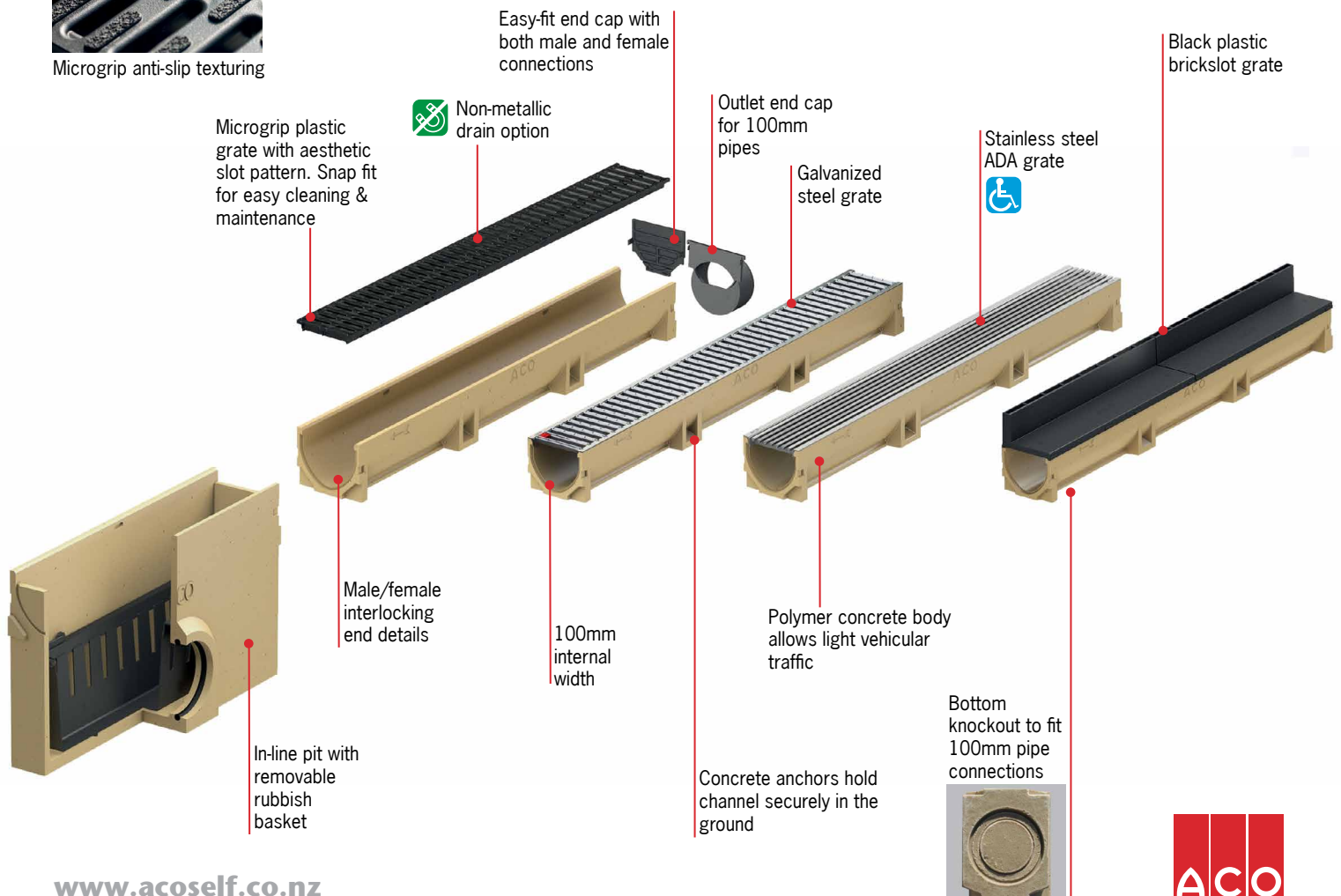
DrainLine 100





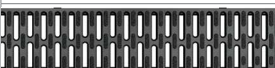

Product Overview



Microgrip anti-slip texturing



Product Table

Design	Part No	Length mm	Width mm	Height mm	Weight kg
DrainLine 100 polymer concrete channel	38509	1000	118	97	6.7
DrainLine 100 polymer concrete in-line pit with plastic rubbish basket	38506+01682	500	118	300	10.7
 Galvanized steel grate	38516	1000	118	12	1.2
 Stainless steel HeelGuard® longitudinal grate	10323	1000	118	12	3.2
 Black plastic HeelSafe® microgrip grate	319250	1000	118	12	0.6
 Brickslot HeelGuard® plastic grate	319554	500	125	75	0.4
Black plastic closing end cap	319288	-	118	97	0.1
Black plastic 100mm dia outlet end cap	319289	-	118	97	0.1

HeelGuard® - slots 10mm or less to prevent stiletto style heels becoming trapped. HeelSafe® - offer anti-slip properties in addition to slots 10mm or less.

Installation Instructions

1 EXCAVATE



Excavate trench and set a string line to determine alignment and finished height of channel run.

2 LAY A FIRM BASE



Pour concrete bed - 300mm wide by 100mm deep; keep outlet pipe clean.

3 LAY CHANNELS



Lay channels starting at outlet. Set to string line to ensure level and straight. Seal joints if required.

4 FIT END CAPS



Fit end caps. Insert grates. Protect grates from concrete splash with plastic. These illustrations are for guidance only, professional guidance should be sought.

5 PAVEMENT/BACKFILLING



Install pavers or finish pavement surround to required level. Should be 3mm above grate.

6 COMPLETE THE INSTALLATION



Clean away debris, remove protective plastic from grates.

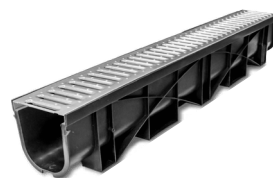
ACO Self Polymer concrete and plastic line drains and in-line pits also available



ACO Limited

Unit E/6 Percival Gull Place
Mangere, Auckland 2022
New Zealand

Tel: 0800 448 080
Tel: +64 (0)9 815 9500
Fax: +64 (0)9 255 5114



Electronic Contact
info@aconz.co.nz
www.acoself.co.nz

© January 2017 ACO Limited.

All reasonable care has been taken in compiling the information in this document. All recommendations and suggestions on the use of ACO products are made without guarantee since the conditions of use are beyond the control of the Company. It is the customer's responsibility to ensure that each product is fit for its intended purpose and that the actual conditions of use are suitable. ACO Limited reserves the right to change products and specifications without notice.

Re-order LENZ0015

