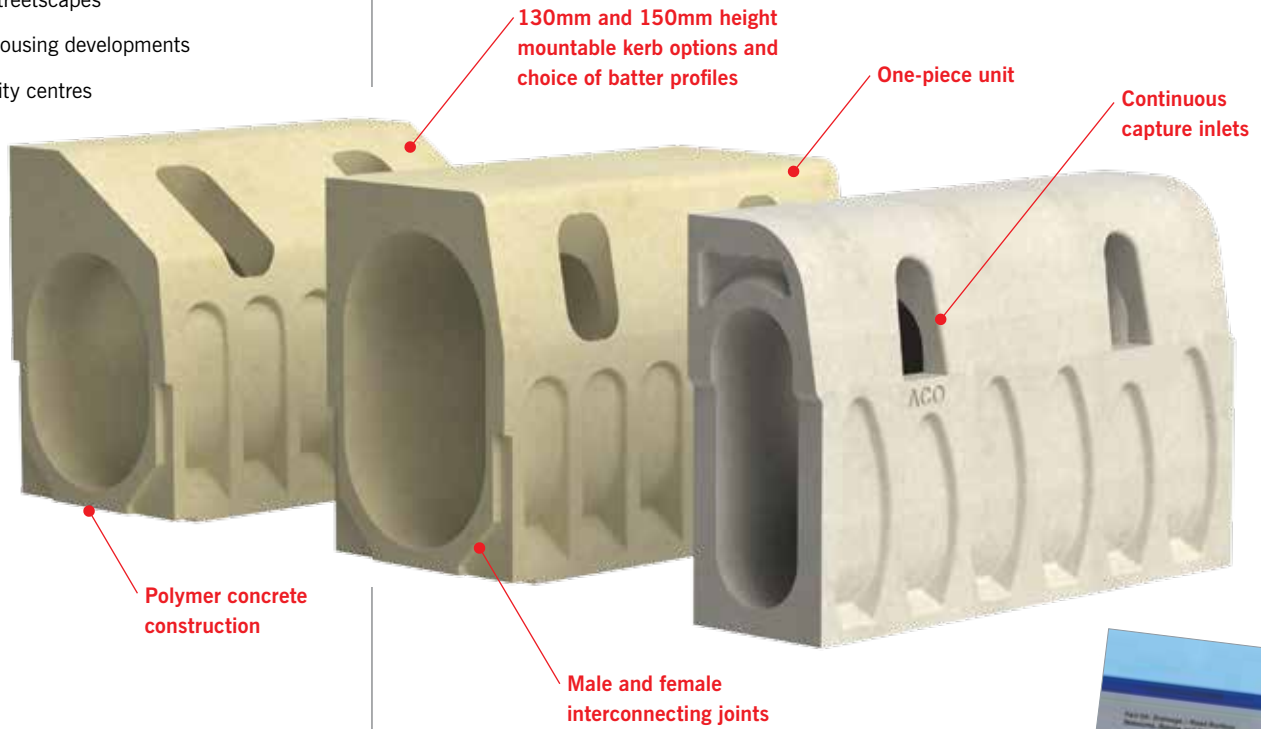


**Typical Applications**

- Highways & motorways
- Intersections
- Carparks
- Streetscapes
- Housing developments
- City centres

**Monolithic kerb and trench drain unit made from polymer concrete**



**Austrroads Guide to Road Design Part 5A: Drainage**, acknowledges ACO's KerbDrain as a practical solution to control the width of gutter flow through the drain's continuous capture inlets.



ACO strongly recommends slotted kerb drain units, exposed to vehicular impact, must be of a **one-piece construction** for safety and product longevity.

**KerbDrain** is a compact linear drainage system designed to transform kerbs into continuous capture inlet structures with minimal excavation. Compared to kerb inlet pit and pipe systems, **KerbDrain** is less likely to interfere or clash with underground pipes or cables.

**KerbDrain** combines the benefits of **Polycrete® Channels**<sup>1</sup> with a robust one-piece construction. **KerbDrain** is a cast channel and kerb system, with inlets for continuous drainage. The underlying channel transfers captured water directly into the stormwater system.

<sup>1</sup>Polycrete® refers to ACO products made from polymer concrete.

Centre kerb allows continuation of water flow whilst allowing level access for pedestrians and vehicles.

1. Driveway centre kerb (40mm diameter slots)
2. Walkway centre kerb (no slots)

Drop kerbs allow transition from standard to centre kerb

One-piece kerb unit with two inlets per 600mm section

Hand recess for lifting

Profiled side walls and ribs provide channel strength and anchorage to concrete encasement

200mm internal channel width (QK200SF and QK200SM)

100mm internal channel width

Drainage slots 57mm wide x 107mm high

**QK200SF and QK200SM**  
(QK200SF shown)

**QK100**

**QK100** is a modular drainage system designed for streetscapes and carpark applications where level access for pedestrians and vehicles is required.

**QK200SF** KerbDrain meets NSW Roads and Maritime Services (RMS) Type SF kerb face profile and provides visual continuity when installed directly next to a Type SF kerb.

**QK200SM** KerbDrain meets Main Roads WA (MRWA) Type SM kerb face profile and provides visual continuity when installed next to a Type SM kerb.

Access unit with ductile iron lid. Clear opening of 80mm x 260mm

Access units are to be located at the start and end of the run, and/or at the outlet points. For long runs, space access units at 20 to 30 metre intervals or to engineers specifications.

Access unit has provisions for a DN200 vertical outlet and a DN225 horizontal outlet through the back of the unit (QK200SF, QK200SM and QK200B)

Modular drain with mountable kerb profile

Access unit with aluminium lid. Clear opening of 120mm x 200mm (QK200SF, QK200SM and QK200B)

Modular drain with barrier kerb profile

One-piece kerb unit with two inlets per 500mm section (QK200SF, QK200SM and QK200B)

Drainage slots 70mm wide x 120mm high (QK200SF, QK200SM and QK200B)

200mm internal channel width

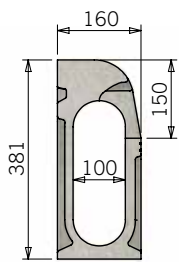
**Installation device** allows KerbDrain to be set up for a single concrete pour (QK200SF, QK200SM and QK200B).

One installation device required per KerbDrain unit (0.5m) plus one additional installation device for the end of the run.

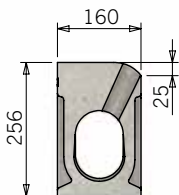
### QK200B

Set-up on Installation Devices  
(Also available for QK200SF  
and QK200SM)

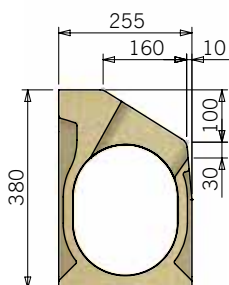
**QK200B** KerbDrain meets most Australian Road Authority barrier kerb profiles.



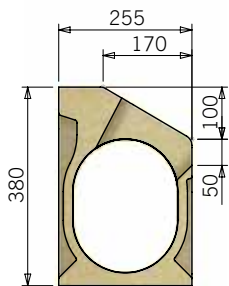
**QK100**



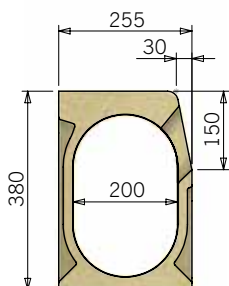
**QK100 Centre**



**QK200SF**



**QK200SM**



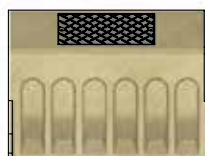
**QK200B**

Description	Part No.	Invert Depth mm	Weight kg
<b>QK100 KerbDrain &amp; Accessories (EN 1433 Class D400kN)<sup>1</sup></b>			
QK100 KerbDrain unit – (0.6m)	92399	206	34.9
QK100 Access unit – (0.6m)	92395	206	37.7
QK100 Driveway drop kerb – left (0.6m)	141293	206	33.1
QK100 Driveway drop kerb – right (0.6m)	97327	206	33.1
QK100 Driveway centre kerb with slots – (0.905m)	141294	206	48.5
QK100 Walkway drop kerb – left 1 of 2 (0.75m)	92407	206	42.8
QK100 Walkway drop kerb – left 2 of 2 (0.75m)	92403	206	40.1
QK100 Walkway drop kerb – right 1 of 2 (0.75m)	92405	206	42.8
QK100 Walkway drop kerb – right 2 of 2 (0.75m)	92402	206	40.1
QK100 Walkway centre kerb – (0.905m)	97316	206	48.1
QK100 Pit – (0.6m)	92390	1080	240.0
QK100 End cap	97293	–	7.3
<b>QK200SF KerbDrain &amp; Accessories (AS 3996 Class D210kN)</b>			
QK200SF KerbDrain unit – (0.5m)	141205	225	41.0
QK200SF Access unit – (0.5m)	141206	225	42.0
QK200SF End cap	141207	–	3.7
QK200 Installation Device	142053	–	1.9
<b>QK200SM KerbDrain &amp; Accessories (AS 3996 Class D210kN)</b>			
QK200SM KerbDrain unit – (0.5m)	142351	205	40.8
QK200SM Access unit – (0.5m)	142352	205	42.3
QK200SM End cap	142353	–	3.6
QK200SM End cap with DN150 inlet/outlet	142354	–	2.7
QK200 Installation Device	142053	–	1.9
<b>QK200B KerbDrain &amp; Accessories (AS 3996 Class D210kN)</b>			
QK200B KerbDrain unit – (0.5m)	142291	205	39.3
QK200B Access unit – (0.5m)	142292	205	38.1
QK200B End cap	142293	–	4.0
QK200B End cap with DN150 inlet/outlet	142294	–	2.9
QK200 Installation Device	142053	–	1.9

**Notes**

1. EN 1433 Class D400kN load classification is similar to AS 3996 Class E400kN.
2. Dimensions on drawings are in millimetres.

**Typical QK200 Access Unit**



Access through aluminium lid



Back of unit with DN225 knockout

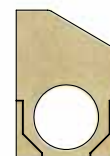


Bottom of unit with DN200 knockout

**Typical QK200 End Cap**



Standard end cap



End cap with DN150 inlet/outlet

**ACO Limited**

**Head Office:**

Unit 1, 6 Percival Gull Place  
Mangere, Auckland 2022  
New Zealand

Sales: 0800 448 080  
+64 9 815 9500 (International)

Email: [info@aconz.co.nz](mailto:info@aconz.co.nz)

Web: [www.aconz.co.nz](http://www.aconz.co.nz)

Representatives in: Auckland  
Wellington  
Christchurch

**Follow us on**



© 2016 ACO Limited. All reasonable care has been taken in compiling the information in this document. All recommendations and suggestions on the use of ACO products are made without guarantee since the conditions of use are beyond the control of the company. It is the customer's responsibility to ensure that each product is fit for its intended purpose and that the actual conditions are suitable. ACO Limited pursues a policy of continuous product development and reserves the right to amend specifications without notice.