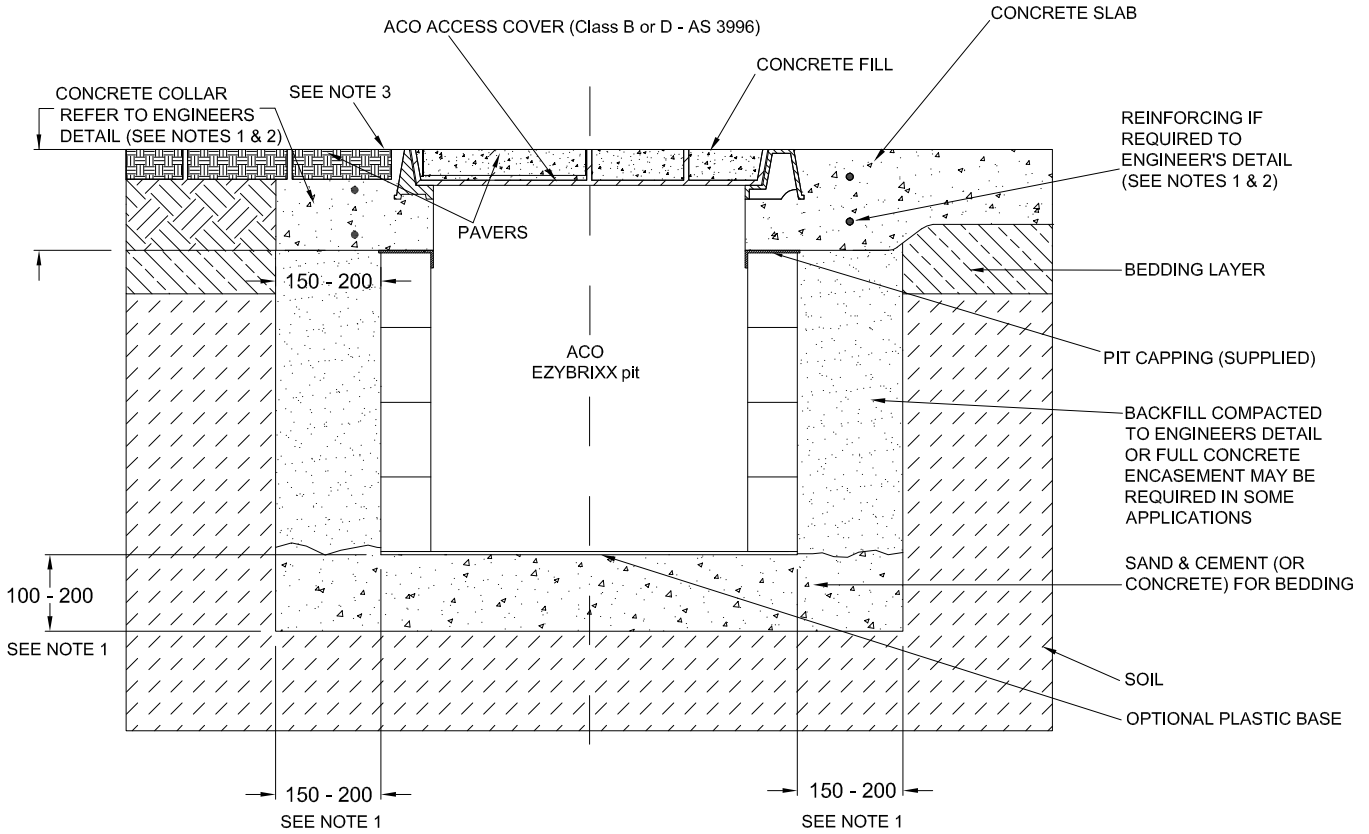


<b>ACO CABLEMATE®</b>	<b>EZYBRIXX PITS INSTALLATION DRAWING</b>	
DWG# IC004	<b>For Paved or Concrete Surfaces</b>	
www.aconz.co.nz		

**For highly trafficked 8000kg SMWL (Max)<sup>5</sup>**



**NOTES:**

1. Specific site conditions may require an increase in these dimensions or reinforcement. It is the customer's responsibility to ensure the correct access cover is selected, encasement is designed for the application and the pit structure is protected from undue stress. *Engineering advice may be required.*
2. A minimum concrete strength of 40MPa is recommended for the collar. The depth of any beam used in a multi-part cover must also be accommodated. Contact ACO for a rebate drawing.
3. The finished floor level must be flush with the top of the frame. Pavers (adjacent to the frame) must be restrained from movement.
4. Refer to ACO's Access Cover installation instructions for complete details. [www.acoaccess.com.au/product-support](http://www.acoaccess.com.au/product-support)
5. Class B and D covers are recommended for 2670kg and 8000kg Slow Moving Wheel Load (SMWL) respectively.

<b>ACO CABLEMATE®</b>	<b>EZYBRIXX PITS SPECIFICATION CLAUSE</b>	ACO Limited Unit F/6 Percival Gull Place Mangere, Auckland 2022 Tel: 0800 448 080 Fax: +64 9255 5114 Email: <a href="mailto:info@aconz.co.nz">info@aconz.co.nz</a>
DRWG# IC004	<b>With Access Cover</b>	
www.aconz.co.nz		

The cable enclosure(s) with a *clear opening(s)* of ..... shall be **ACO EzyBrixx pit(s) size (s) ..... and/or part no.(s) .....** with ACO Solid Top / Recessed Access Cover(s) and *part no.(s) .....*

All materials and components within the scope of the system shall be obtained from ACO Pty Ltd and the work shall be carried out as specified in accordance with the manufacturer's installation recommendations.